



5-7 Westcliff Avenue, Westcliff-on-Sea, SS0

BUTLER & STAG



Stunning one bedroom apartment set within this newly converted development, adjacent to the seafront and Cliffs Pavilion with Westcliff Station a short walk.



- Ground Floor Apartment
- Newly Refurbished
- High Ceilings
- Integrated Appliances
- Available Immediately
- Good Transport Links

Nestled in the charming area of Westcliff-on-Sea, this delightful apartment presents a unique opportunity for those seeking a home in a desirable location. This property is situated in a vibrant community known for its picturesque seaside views and welcoming atmosphere.

Westcliff-on-Sea boasts a variety of local amenities, including shops, cafes, and recreational facilities, all within easy reach. The area is well-connected by public transport, making it convenient for commuting to nearby towns and cities.

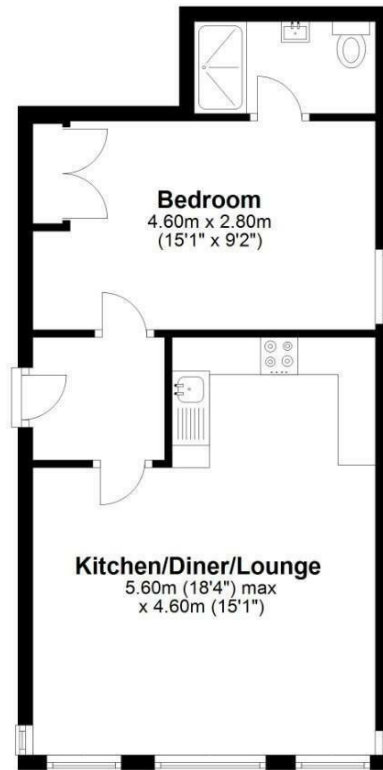
This property offers a blank canvas for prospective tenants to envision their ideal living space. With the stunning coastline just a short stroll away, residents can enjoy leisurely walks along the beach or partake in various water activities. The surrounding parks and green spaces provide ample opportunities for outdoor enjoyment, making it an ideal location for individuals and couples alike.





Ground Floor

Approx. 42.3 sq. metres (455.8 sq. feet)



Total area: approx. 42.3 sq. metres (455.8 sq. feet)

Cliff Apartments

IMPORTANT NOTICE - These particulars have been prepared in good faith and they are not intended to constitute part of an offer or contract. We have not performed a structural survey on this property and the services, appliances and specific fittings have not been tested. All photographs, measurements, floor plans and distances referred to are given as a guide and should not be relied upon.

BUTLER & STAG

☎ 01992 667666

🏠 4 Forest Drive, Theydon Bois, Essex, CM16 7EY

✉ theydon@butlerandstag.com

www.butlerandstag.uk